

4,700 SQ FT AVAILABLE
For Sale or Lease



Westport Road - Just West of State Line Road
1913 - 1915 W. 43rd Street, Kansas City, Kansas



Estimated Population
261,133

Average Household Income
\$62,609

Five Mile Radius

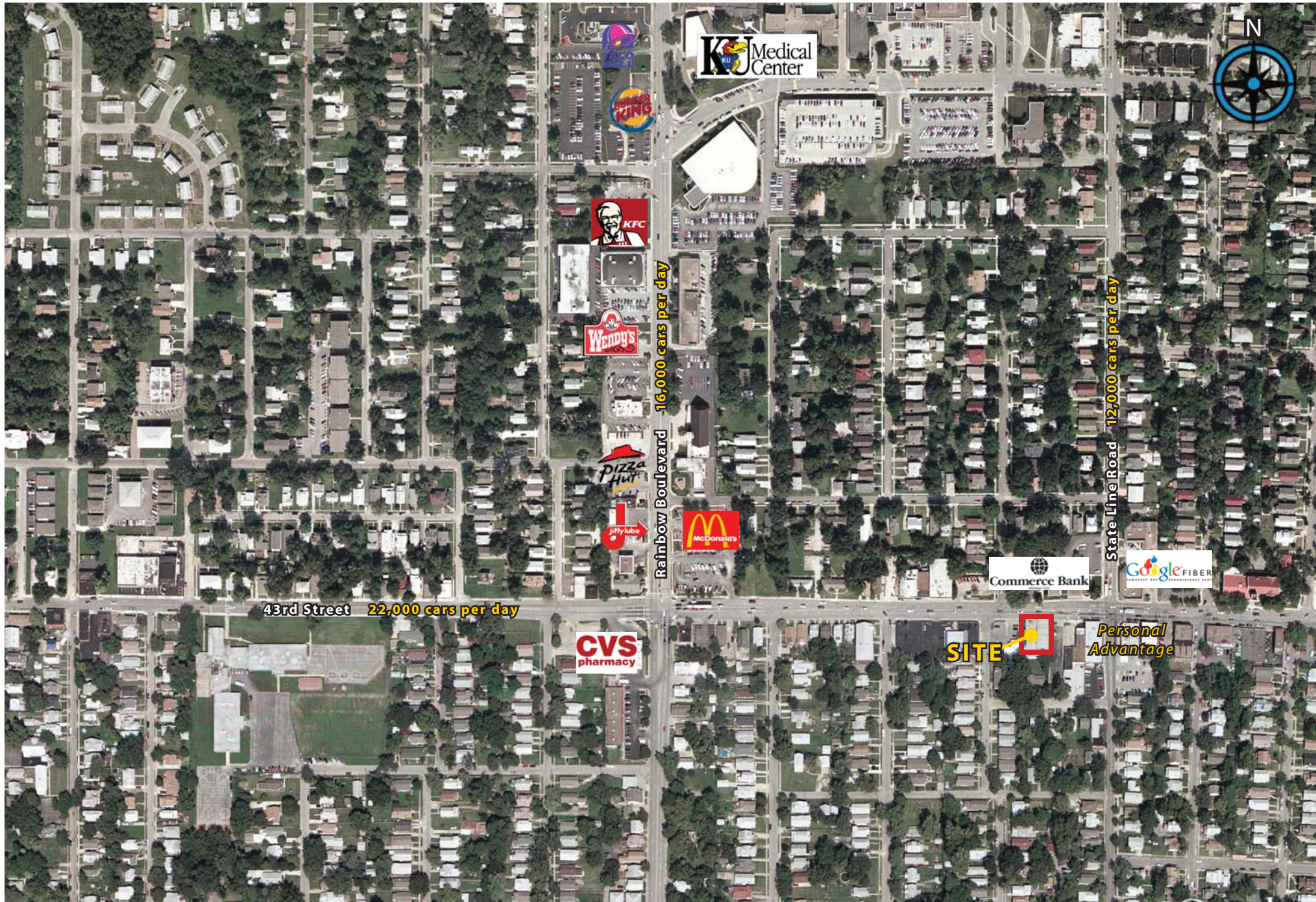
- Zoned C-1
- 16 car parking
- Drive-in door
- 12 foot high ceiling
- State Line Road & 43rd Street carry over 34,000 cars per day

BLOCK & COMPANY, INC., Realtors 816.753.6000
In the Skelly Building on the Country Club Plaza
605 West 47th Street, Suite 200, Kansas City, Missouri 64112

For Information Contact:

Max Kosoglad
816.412.7363
mkosoglad@blockandco.com

1913 - 1915 W. 43rd Street, Kansas City, Kansas



Lat: 39.0508 Lon: -94.6089 Zoom: 11 mi Logos are for identification purposes only and may be trademarks of their respective companies.



©2009, SITES USA Inc., Chandler, AZ (480) 491-1112. All Rights Reserved.

1913 - 1915 W. 43rd Street Kansas City, Kansas

May 2009

This map was produced using data from private and government sources deemed to be reliable. The information herein is provided without representation or warranty.



SUMMARY DEMOGRAPHIC PROFILE

- Census, 2011 Estimates & 2016 Projections

Calculated using Proportional Block Groups

Lat/Lon: 39.05022/-94.60897

July 2012

RS1

1913 - 1915 W. 43rd Street Kansas City, Kansas		1.00 mi radius	3.00 mi radius	5.00 mi radius
POPULATION	2011 Estimated Population	17,141	101,759	261,133
	2016 Projected Population	17,214	101,819	261,023
	Census Population	18,227	110,338	280,780
	Census Population	18,452	118,857	300,406
	Historical Annual Growth to 2011	-0.3%	-0.7%	-0.6%
	Projected Annual Growth 2011 to 2016	0.1%	0.0%	-0.0%
	2011 Median Age	39.3	37.0	36.0
HOUSEHOLDS	2011 Estimated Households	9,400	48,335	115,070
	2016 Projected Households	9,610	50,226	118,893
	Census Households	10,024	51,283	119,976
	Census Households	9,972	53,862	125,627
	Historical Annual Growth to 2011	-0.3%	-0.5%	-0.4%
	Projected Annual Growth 2011 to 2016	0.4%	0.8%	0.7%
POPULATION BY RACE	2011 Estimated White	75.4%	66.7%	57.1%
	2011 Estimated Black or African American	10.3%	20.2%	29.8%
	2011 Estimated Asian & Pacific Islander	3.5%	2.8%	2.3%
	2011 Estimated American Indian & Native Alaskan	0.6%	0.6%	0.6%
	2011 Estimated Other Races	10.1%	9.8%	10.3%
	2011 Estimated Hispanic	17.3%	15.5%	16.6%
INCOME	2011 Estimated Average Household Income	\$ 58,185	\$ 72,520	\$ 62,609
	2011 Estimated Median Household Income	\$ 45,452	\$ 55,305	\$ 49,670
	2011 Estimated Per Capita Income	\$ 32,390	\$ 35,051	\$ 28,059
EDUCATION (AGE 25+)	2011 Elementary	4.6%	4.0%	5.3%
	2011 Some High School	5.1%	7.9%	10.0%
	2011 High School Graduate	19.9%	21.2%	26.8%
	2011 Some College	14.6%	17.5%	18.3%
	2011 Associates Degree Only	6.2%	5.4%	5.4%
	2011 Bachelors Degree Only	32.6%	27.2%	21.5%
	2011 Graduate Degree	17.0%	17.0%	12.7%
BUSINESS	Number of Businesses	1,509	6,522	14,963
	Total Number of Employees	27,226	108,042	272,036
	Employee Population per Business	18.0	16.6	18.2
	Residential Population per Business	11.4	15.6	17.5

This report was produced using data from private and government sources deemed to be reliable. The information herein is provided without representation or warranty.